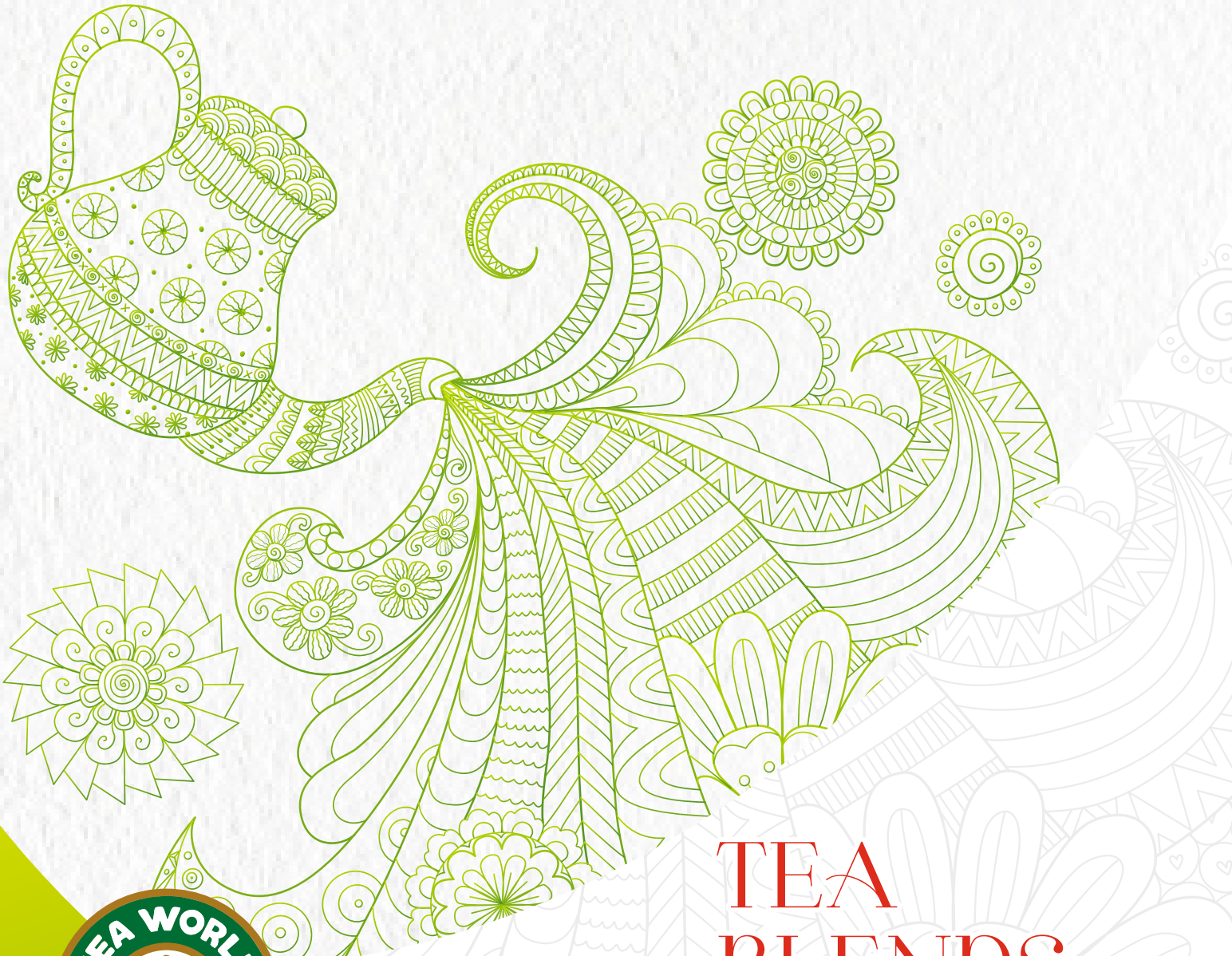


TEA WORLD

Making Every Moment Delicious



TEA
BLENDS
CREATED WITH
PASSION





A CUP OF TEA A DAY, KEEPS WORRIES AWAY!

Tea is an integral part of our households. "A Cup of tea" is the first thing that is sought during stressful moments. Our mornings and evenings are incomplete without a cup of tea. Tea defines us. The inception of Tea World' is inspired from a desire to strengthen this special bond.

We, at Tea World, have been striving to celebrate and relish amazing versions of Tea. Our authentic ingredients and passion for Tea makes us stand apart. Telangana is a state that celebrates culture and we are proud to establish Teaworld here.

The Telangana Government earnestly supports Entrepreneurial Spirits and Teaworld is a testimony to it. Ventures like these are destinations to numerous youngsters seeking a profitable, exciting and own enterprise. Teaworld is a brand that celebrates, respects and relishes Tea.

We look forward to serving you That Special Cup of Tea you have long been waiting for!

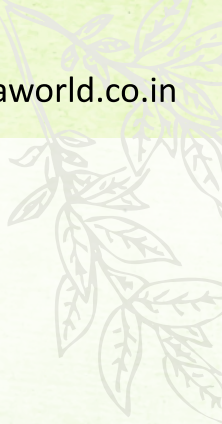




INTRODUCTION

Since the 3rd century AD, tea has been popularized during the Chinese Tang dynasty and was spread to East Asian countries. India being one of those highly tea consuming countries, tea has always been part of their daily drinks. Tea World is remarkably known for its wide range of tea offerings with best quality in every granule. We spread into clusters of tea outlets extending a variety of tea, coolers and milkshakes that can change your mood in seconds. Taste our quality rich products at affordable prices.





ABOUT US

Tea World is the story of a foodie who finally realized how important tea is to this wonderful world. The team behind Our concept has left no pages unturned to bring to you perfect blend, brewing & cooking to birth to the nation's finest tea inspired brand.

We are a one stop solution for your entire tea cravings. Our lively theme and sparkling atmosphere is the perfect way to spend time with friends and family over our finest cup of tea. With a spacious and lively outdoor sitting, a warm and cozy indoor tea bar there should be enough space for everyone.

Our menu includes a range of beverages to cater to all tastes and desires along with a choice of mouth watering shakes and refreshing drinks.

WE LOOK FORWARD TO
SERVE YOU AND YOUR FAMILY.



OVERVIEW

Tea World Is One Of The Upcoming Tea Brands Of The Country And It Has Got A Chain Of Outlets Selling Aura Of Tea Varieties, cold Tea Types and Milkshakes.

Unique Ingredients And Authentic Taste Are Tea World's Speciality.

We have processing plants in the cities like Hyderabad, Kolkata and our Research and Development unit is stationed at Hyderabad.

Quality Is Our Main Aim. We Prepare The Best Tea Leave To Cater To The Needs Of The Tea Tasters.



WHY TEA WORLD?

We stand for Authenticity. We are reputed for Authentic Teas. Each of our Tea blends is uniquely crafted to invoke an authentic tea sipping experience and made to satisfy our passion for Tea. Our tea is known for natural goodness and an awesome taste. We are a rapidly growing family and we would love you to be a part of it

HOW ARE WE UNIQUE?

We differ from others by our unique and authentic ingredients. Every sip you drink is a drop of purity and quality. We process tea and other ingredients under hygiene conditions and see that there is a quality check before it is out for our chai lovers. We have our very own processing unit and have a chain of outlets that exclusively serve the best tea in India. We sell the best tea that relishes your taste buds. We strive hard to put forth our best efforts to introduce a variety of tea which are both healthier and tastier. The more you taste, the more you wish to have from the Tea World.



**FAST GROWING
BRAND WITH**

300+ OUTLETS

Our franchise units are spread across in almost all the states of India and it has got a sizzable number of units in South India.



LESS INVESTMENT

If you want to become a franchise on Tea World you just need to invest Rs. 3,50,000/- lakhs which includes franchise fee, startup kit and moveable equipment. The startup kit includes a refrigerator, deep freezer, stoves and utensils. GST is additional and this startup kit would enable starting a business.



HIGH PROFIT MARGIN

Our profit margin ranged between 45 percent to 85 percent and the production cost is reasonable. We provide dum tea at Rs. 10 to the premium milkshake at Rs. 99.

EXPERIENCE THE ULTIMATE TASTE

We extract from the best tea estates and bring to you the best flavors of different regions. The moment you taste our tea, you lose yourself in experiencing the rich tradition of tea. We are enthusiastic to make you taste the best tea, milkshakes and coolers during every season.



MENU

TEAS

| | |
|---------------|------|
| Dum Tea | 10/- |
| Black Tea | 15/- |
| Masa la Tea | 20/- |
| Milk | 20/- |
| Kultad Tea | 20/- |
| Ginger Tea | 20/- |
| Lemon Tea | 20/- |
| Bellam Tea | 20/- |
| Elachi Tea | 20/- |
| Pepper Tea | 20/- |
| Pepper Milk | 20/- |
| Bada m Milk | 20/- |
| Horlicks | 20/- |
| Boost | 20/- |
| Kashmir Tea | 20/- |
| Chocolate Tea | 20/- |
| Ginger Lemon | 20/- |
| Green Tea | 25/- |

COFFEES

| | |
|-------------------|--------|
| Hot Coffee | 20/- |
| Black coffee | 20/- |
| Bellam coffee | 20/- |
| Cold Coffee | 60/- |
| Strawberry Coffee | 60/- |
| Chocolate Coffee | 60/- |
| Nutella Coffee | 90/- \ |

LASSIS

| | |
|---------------------|------|
| Sweet Lassi | 40/- |
| Mango Lassi | 40/- |
| Banana Lassi | 40/- |
| Strawberry Lassi | 40/- |
| Matka Lassi | 45/- |
| Chocolate Lassi | 50/- |
| Royal Dates Lassi | 50/- |
| Black Current Lassi | 50/- |
| Dry Fruit Lassi | 50/- |

COOLERS

| | |
|----------------------|------|
| Lime Mint | 40/- |
| Ginger Lemon Ice Tea | 40/- |
| Blue Curacao | 40/- |
| Water Melon | 45/- |
| Fizi Mojito | 45/- |
| Rose Mojito | 45/- |
| Orange Mojito | 45/- |
| Litchi Mojito | 45/- |

MILK SHAKES

| | |
|--------------------|------|
| Mango Shake | 60/- |
| Oreo Shake | 60/- |
| Vanilla Shake | 60/- |
| Strawberry Shake | 60/- |
| Chocolate Shake | 60/- |
| Butterscotch Shake | 60/- |
| Pineapple Shake | 60/- |
| Banana Shake | 60/- |
| Guava Shake | 60/- |

FLAVORED MILKS

| | |
|--------------------|------|
| Chilled Badam Milk | 45/- |
| Rose Milk | 45/- |

PREMIUM SHAKES

| | |
|---------------------|------|
| Mulberry Shake | 90/- |
| Pista Shake | 90/- |
| California Shake | 90/- |
| Italian Shake | 90/- |
| Royal Dates | 90/- |
| Cranberry Shake | 90/- |
| Kiwi Shake | 90/- |
| Custard Apple Sahke | 90/- |
| Ban The Banana | 90/- |
| Green Apple Shake | 90/- |





OUR SPECIALITIES

- We have rich experience in running the business across various cities.
- An innovative concept with the Progressive mindset that helps your business in staying above the par with the competition.
- End-to-end support in setting the business. Right from sourcing those quality materials to the healthy and delectable drinks and the perfect interior set up your business is set to have a boosted start.
- You can have a set of challenges at any stage of your business life-cycle, and that's where we stand out with our continued solution provision and support.
- Business model anchored on Partnership.
- Thoughtfully defined financial plans. These plans help the business stay away from any financial crunch or losses while.
- We make an addition on a new proposition to the business only with mutual consent. We love to keep any disagreements and disputes at bay.
- Always an eye on a collective future. Creating a win-win situation for both the alliance.





WITH 300+ OUTLETS, WE ARE THE LARGEST
TEA STALLS CHAIN IN THE COUNTRY.

UNIT FRANCHISE

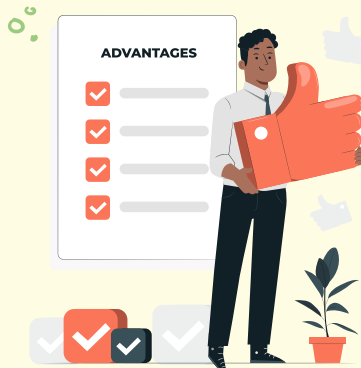
Requirements

- Store Size : Minimum 100 sq. ft.
- Investment : Below 5 Lakhs.



BENEFITS

- Marketing & Advertising Support
- Great Margins
- Operational Support
- Staff training
- Social Media Marketing





CONSIDERATIONS

OUTLET

The Outlet should be of a minimum 100 Sq Ft at a busy locality which can either be at bus stops, on the highways hospitals, markets, railway stations, IT campuses and educational institutions

INTERIOR

The ambience of an outlet should comprise tile flooring, kitchen partition, water connectivity, and an Outlet counter. Franchisees have to arrange these facilities while the rest will be taken care of by the Company.

KITCHEN

For the kitchen, you need to get two employees and they would be trained by our chef to run your business. Entire Tea World menu can be learnt in Five days.





OUTLET

The Outlet should be of a minimum 100 Sq.Ft. at a busy locality which can either be at bus stops, on the highways hospitals, markets, railway stations, IT campuses and educational institutions

KITCHEN

A comprehensive one with Fridge, Deep freezer, High pressure stove, with well equipped induction stove and initial stock facility. These are all provided by us.

BOARDS

The brand name of the outlet on the board would be provided by the Tea world professionals. It Would comprise a Lollipop board and a name board

- Total Branding
(LED Main Board, Spreading Board, Business Board, Menu Board, Logo Stickers, Lollipop Board, Photo Frames)

BRANDING

The branding comprises interior branding, Menu Highlighter, Photo Frames, Foam Board, Eco Solvent, Vinyl etc.

- Double door Refrigerator 250 ltrs
- Double door freezer 350 ltrs
(Voltus, Blue star, Western)

CONSIDERATIONS

- Display hot Oven (3x3x2)
- Total Kitchen Items
(Including Spoons and Dustbins)
- Dress code (T-Shirts and Caps)

INTERIOR

The ambience of an outlet should comprise tile flooring, kitchen partition, water connectivity, and an Outlet counter. Franchisees have to arrange these facilities while the rest will be taken care of by the Company.

- Furniture (Table-1, Chairs-4, Stools-6)

KITCHEN

For the kitchen, you need to get two employees and they would be trained by our chef to run your business. Entire tea World menu can be learnt in Five days.

LESS INVESTMENT AND HIGH RETURNS ON INVESTMENT

It is certain that one could earn High Returns on Investment and amazing Profits from this model of business, Even if there is an assumption of average daily sales of Rs. 6,000, one could easily earn a Net Profit of Rs. 1 Lakh per month. With such a conventional calculation, some could easily Break-Even within the first 4 months.

Our SUPPORT

THE TEA WORLD SUPPORTS YOU in outlet identification process, provides u complete startup kit, it supports u to prepare Tea World unique menu. Similarly it offers operational support, imparts initial management training offers research and development updates, publicity initiation process and it gives the use of brand trademarks and slogans.

Own a Franchise of India's fastest growing tea tradition.

We appreciate your interest in a committed collaboration with Tea World and its franchise opportunities. Our vision is to reach to all tea lovers and make them taste the best variants of tea globally. If not lovers, we will surely turn them into tea lovers with our authentic variants of coolers and shakes. We are looking for dedicated and pledged entrepreneurs who wish to connect with our franchises. We believe in laying a strong foundation from the time of identification to building of strong franchises. We are always up for small scale businesses and try to promote them in every way possible. Similarly, we encourage extending proficient business opportunities.

Our doors will always be open for competent entrepreneurs who are capable of expanding the chain of franchises and strive towards the development of the company. You can take the role of an ambassador in promoting our culture of tea and help in serving our customers with premium beverages, milkshakes and coolers. Join us today and see the magic!





Zonal Office:

H. No. 18-32, Beside pista house,
Sadats Villa, Near Uppal Stadium,
Metro Station, Hyderabad, Telangana
Contact : 9988056666

Regional Office :

H. No. 1-495, Chaitannyapuri Colony,
Near Subedari Petrol Pump,
Hanamkonda - 506001
Contact : 90300 03377

Regional Office :

No. 44, Rajaji Street Extension,
Senthil Nagar, East Extension, Thirumullavoyal
Chennai - 600062
Contact : 9110339096

FOR KARNATAKA : +91 96400 03108

FOR MAHARASTRA CONTACT : +91 91600 04108

An exciting
business opportunity
awaits you!

Contact us today!

For Franchise enquiries:
+91 99880 56666
+91 90300 03377